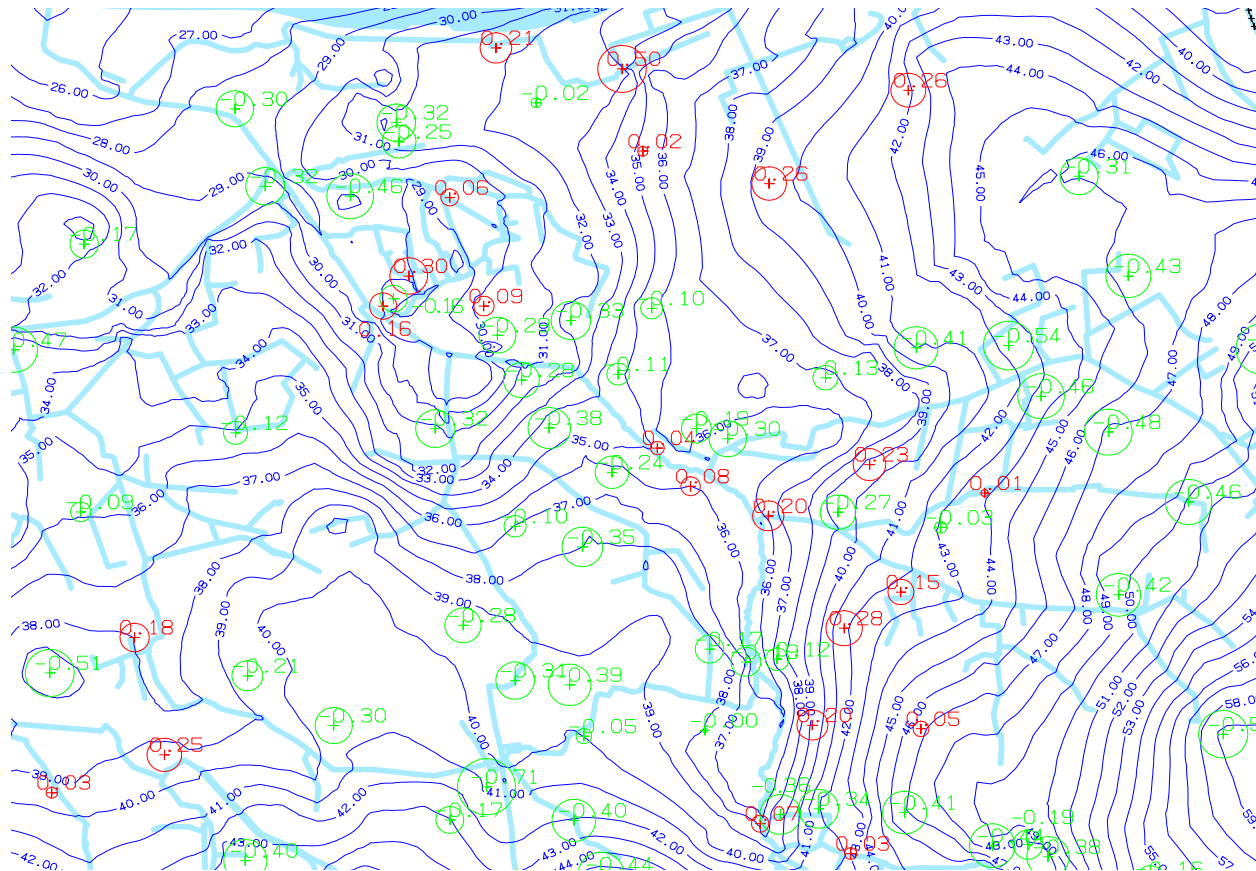


Interpretation of results

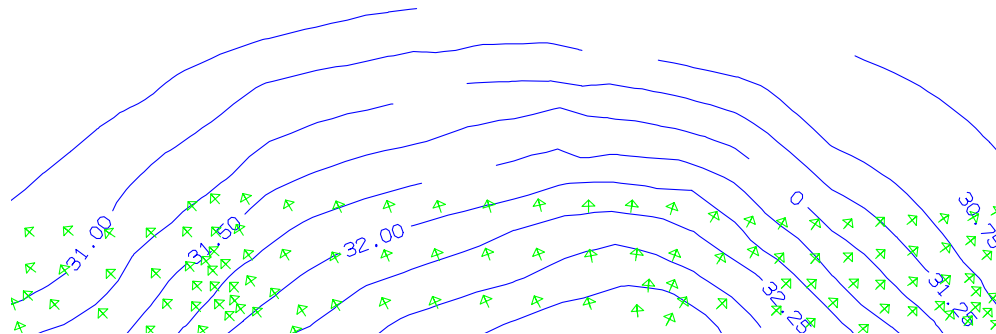
Results in Cross Sections

- Equal value lines (potential head, concentration)
- Maps of differences (e.g. hydroisobath = surface – groundwater table; differences between calculation and measurement)



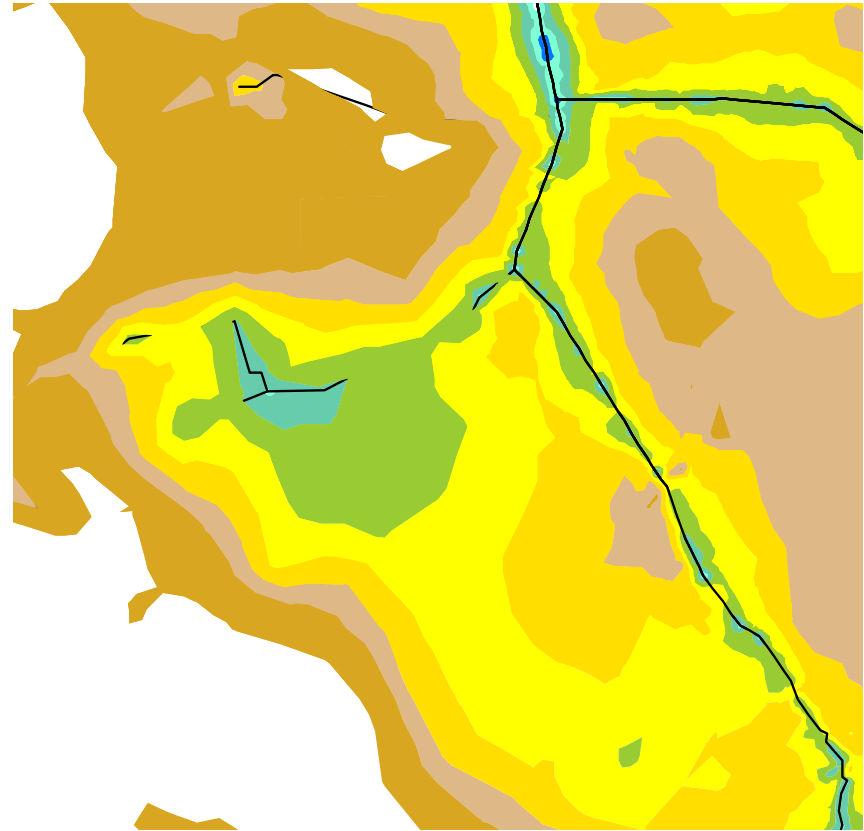
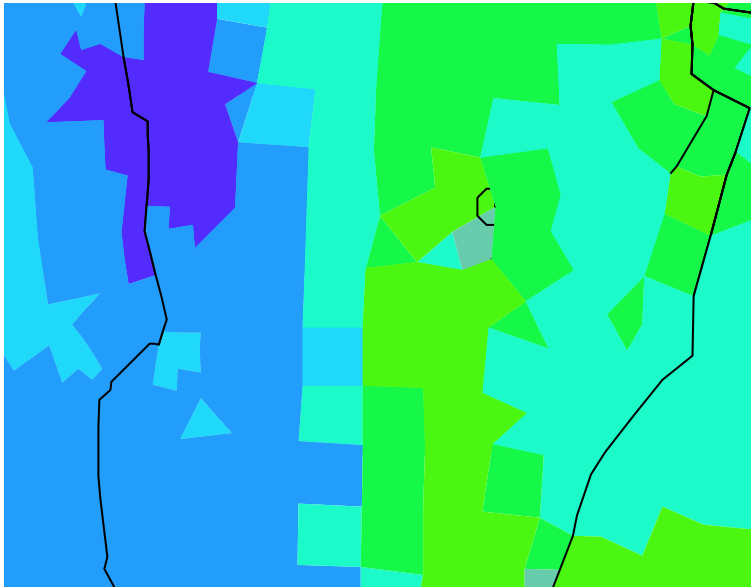
Results in Cross sections

- Vectors for representation of directional values (velocities)



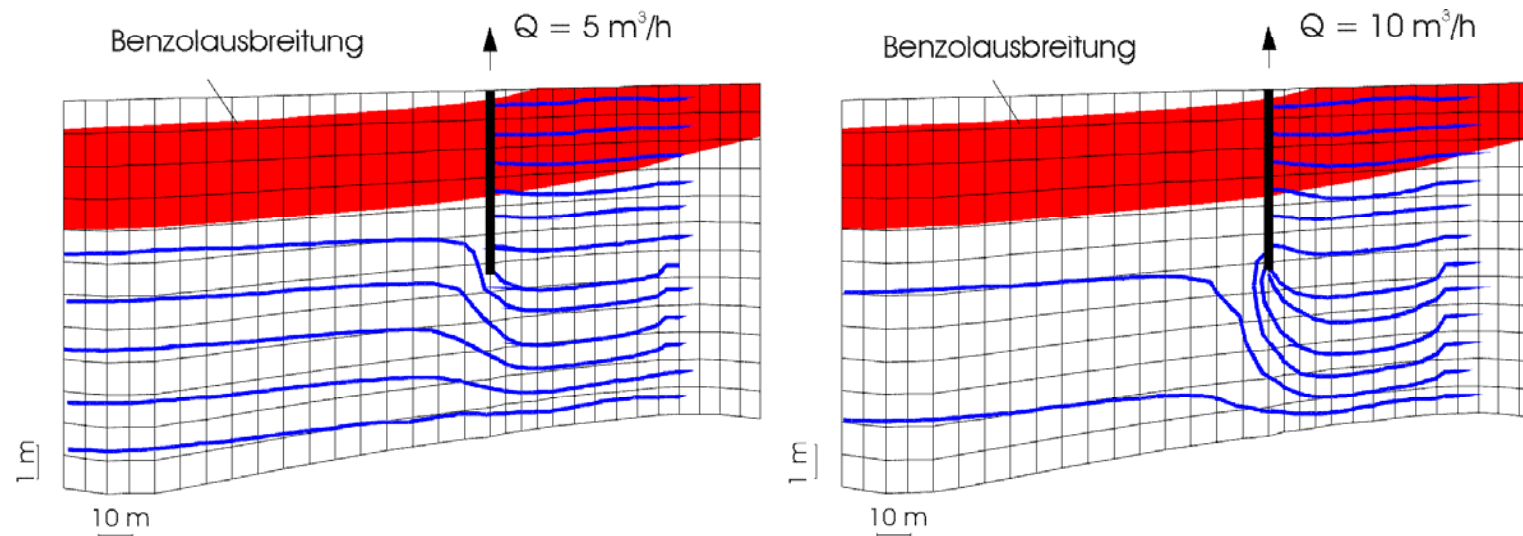
Results in Cross sections

- domain plots (e.g. calibrated permeabilities, hydrobaths)



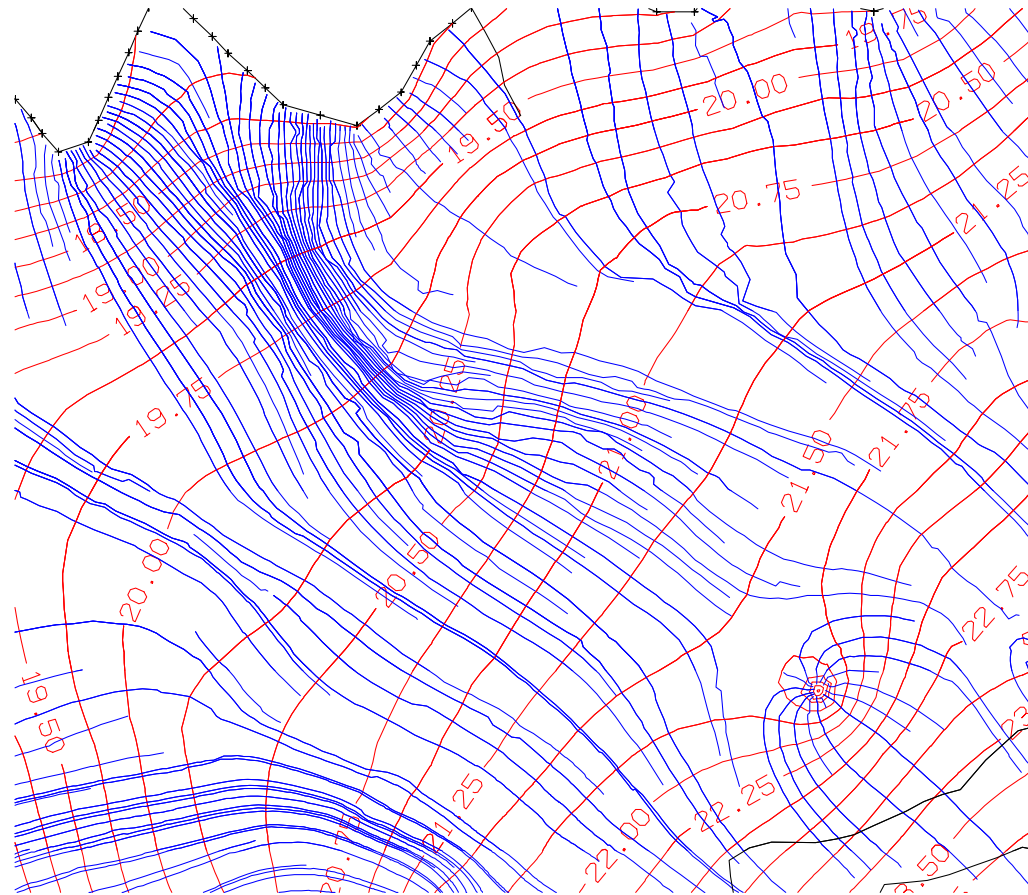
Results in Cross sections

- path lines: path of a fictitious water particle of substance particle without influence of mass



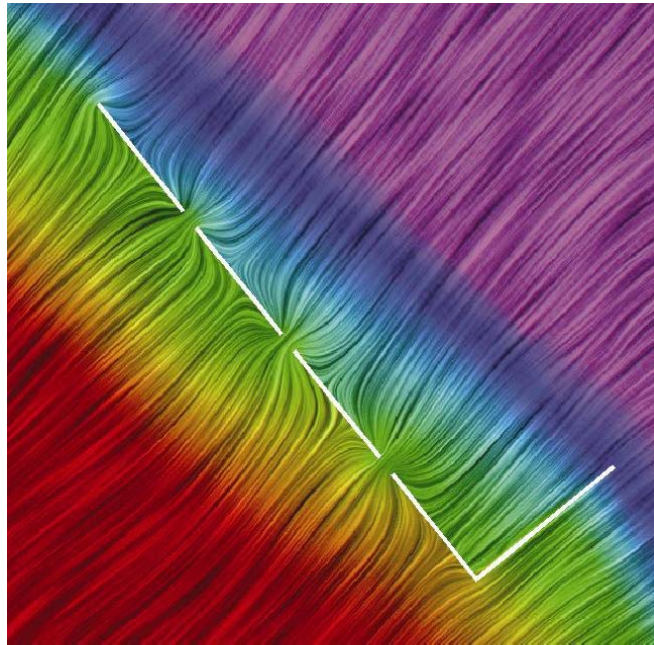
Results in Cross sections

- streamlines: path of constant masses (only 2D)



Results in Cross sections

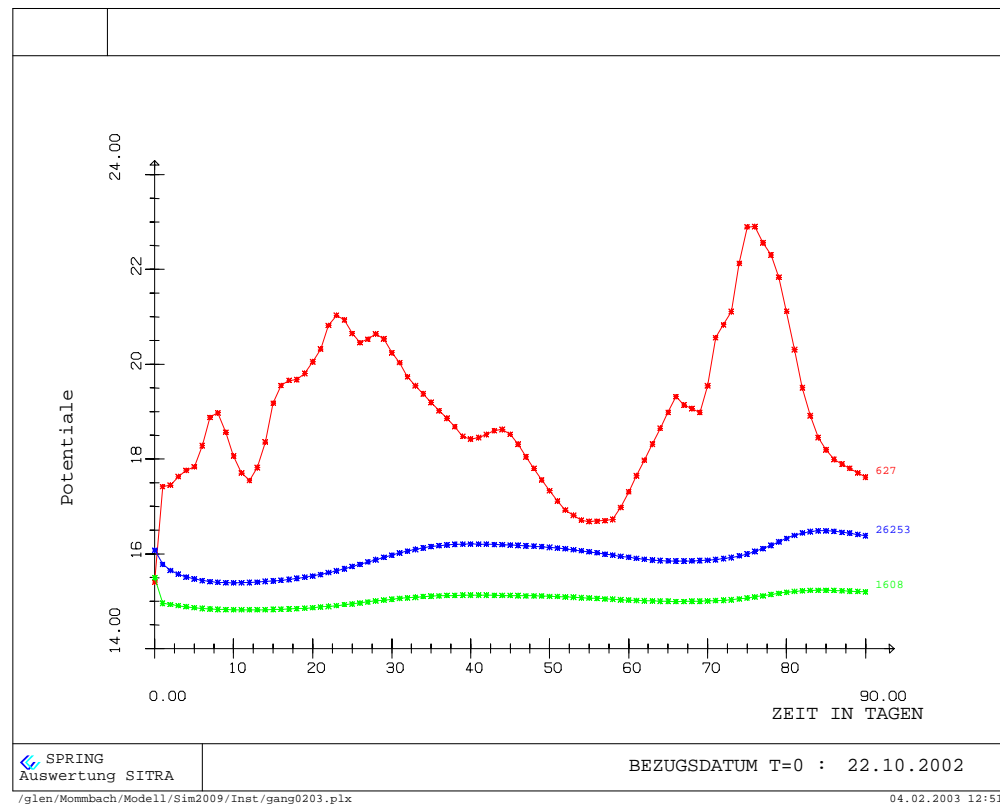
- Cords



Results over Time

transient simulations

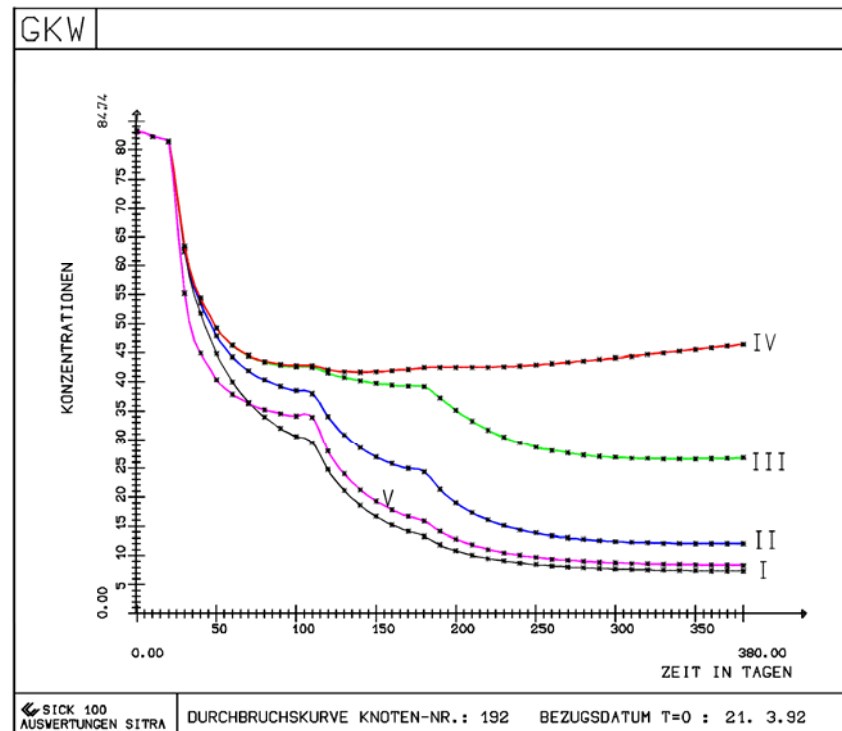
- Hydrograph: graph of potential head or water pressure over time at one node



Results over Time

transient simulations

- Break through curves: concentration over time

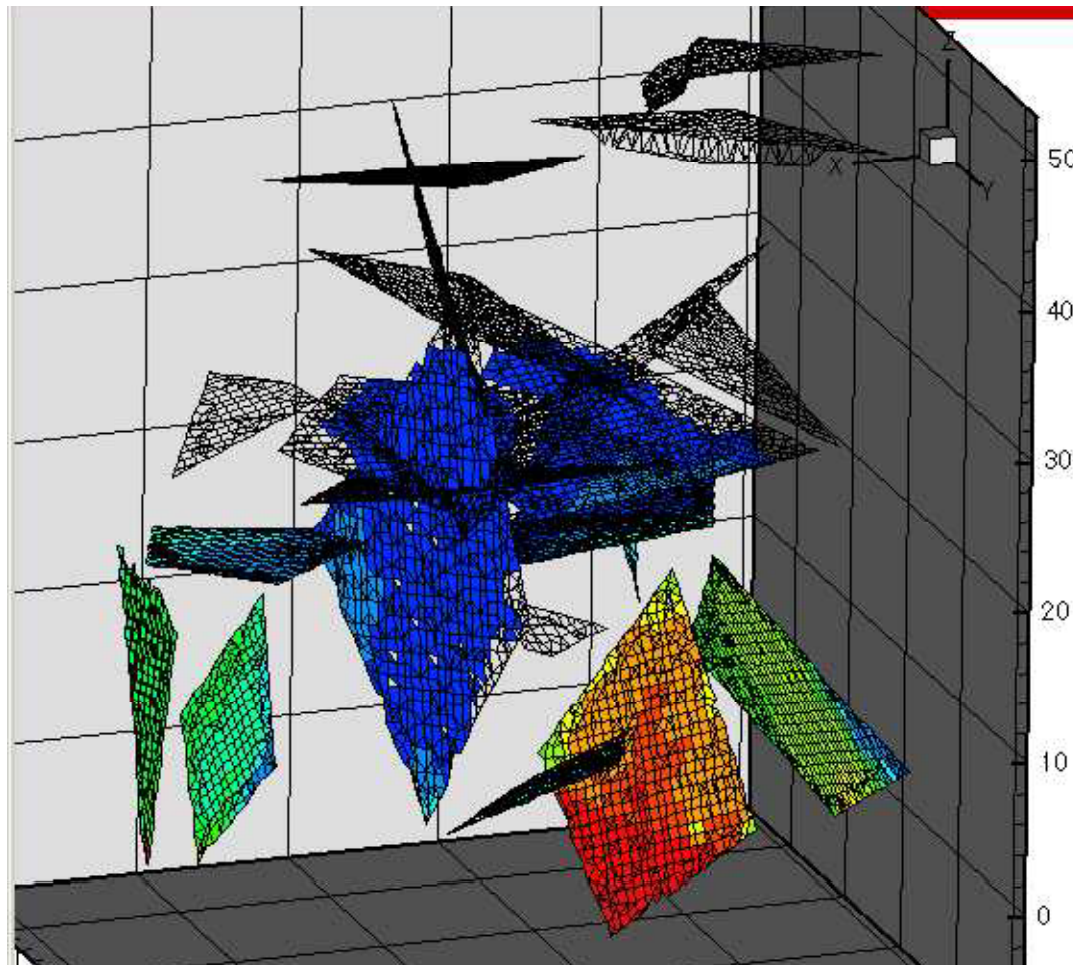


SICK 100
AUSVERTUNGEN SITRA

DURCHBRUCHSKURVE KNOTEN-NR.: 192 BEZUGSDATUM T=0 : 21. 3.92

3D Results

Equal value domains, e.g. contaminant plume



Integration into Information Systems

